

AASS Antibody (Center)
Purified Rabbit Polyclonal Antibody (Pab)
Catalog # AP2779C**Specification**

AASS Antibody (Center) - Product Information

Application	WB, IHC-P,E
Primary Accession	Q9UDR5
Reactivity	Human, Mouse
Host	Rabbit
Clonality	Polyclonal
Isotype	Rabbit IgG
Calculated MW	102132
Antigen Region	264-294

AASS Antibody (Center) - Additional Information**Gene ID** 10157**Other Names**

Alpha-aminoadipic semialdehyde synthase, mitochondrial, LKR/SDH, Lysine ketoglutarate reductase, LKR, LOR, Saccharopine dehydrogenase, SDH, AASS

Target/Specificity

This AASS antibody is generated from rabbits immunized with a KLH conjugated synthetic peptide between 264-294 amino acids from the Central region of human AASS.

Dilution

WB~~1:1000

IHC-P~~1:10~50

E~~Use at an assay dependent concentration.

Format

Purified polyclonal antibody supplied in PBS with 0.09% (W/V) sodium azide. This antibody is prepared by Saturated Ammonium Sulfate (SAS) precipitation followed by dialysis against PBS.

Storage

Maintain refrigerated at 2-8°C for up to 2 weeks. For long term storage store at -20°C in small aliquots to prevent freeze-thaw cycles.

Precautions

AASS Antibody (Center) is for research use only and not for use in diagnostic or therapeutic procedures.

AASS Antibody (Center) - Protein Information**Name** AASS ([HGNC:17366](#))

Function Bifunctional enzyme that catalyzes the first two steps in lysine degradation.

Cellular Location
Mitochondrion.

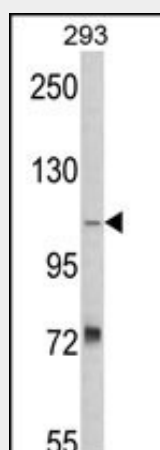
Tissue Location
Expressed in all 16 tissues examined with highest expression in the liver

AASS Antibody (Center) - Protocols

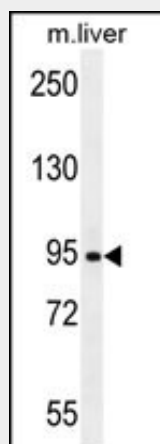
Provided below are standard protocols that you may find useful for product applications.

- [Western Blot](#)
- [Blocking Peptides](#)
- [Dot Blot](#)
- [Immunohistochemistry](#)
- [Immunofluorescence](#)
- [Immunoprecipitation](#)
- [Flow Cytometry](#)
- [Cell Culture](#)

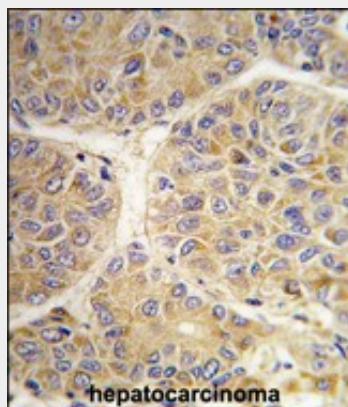
AASS Antibody (Center) - Images



Western blot analysis of AASS Antibody (Center) (Cat. #AP2779c) in 293 cell line lysates (35ug/lane). AASS (arrow) was detected using the purified Pab.



AASS Antibody (Center) (Cat.#AP2779c) western blot analysis in mouse liver tissue lysates (35ug/lane). This demonstrates the AASS antibody detected the AASS protein (arrow).



Formalin-fixed and paraffin-embedded human hepatocarcinoma tissue reacted with the AASS antibody (Center) (Cat.#AP2779c), which was peroxidase-conjugated to the secondary antibody, followed by DAB staining. This data demonstrates the use of this antibody for immunohistochemistry; clinical relevance has not been evaluated.

AASS Antibody (Center) - Background

AASS is a bifunctional enzyme that catalyzes the first two steps in the mammalian lysine degradation pathway. The N-terminal and the C-terminal portions of this enzyme contain lysine-ketoglutarate reductase and saccharopine dehydrogenase activity, respectively, resulting in the conversion of lysine to alpha-amino adipic semialdehyde. Mutations in the gene encoding this protein are associated with familial hyperlysinemia.

AASS Antibody (Center) - References

Sacksteder, K.A., Am. J. Hum. Genet. 66 (6), 1736-1743 (2000)